



## *C4 – Series*

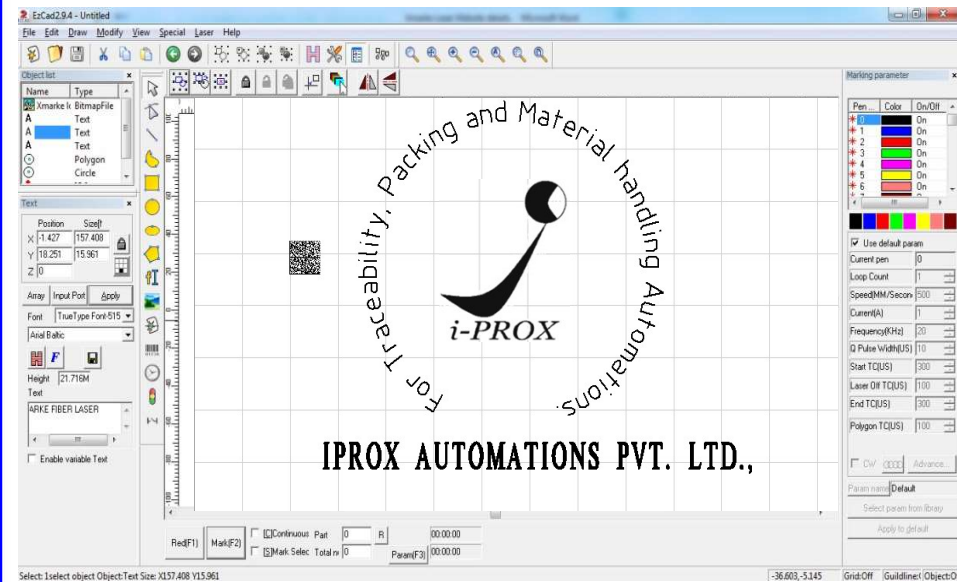
# *Fiber LASER Marking Machine*



- **Class IV safety LASER system.**
- **User friendly software.**
- **Wide range of marking options**
- **Marking on almost all materials is possible.**
- **Reliable and high energy efficient design.**
- **Highly Compatible machine.**
- **Auto focus focal length is available as optional.**
- **Compact and Ergonomic design.**
- **2Years Warranty for LASER source.**
- **High quality optics for precise marking**
- **High marking speed 2 m/s.**
- **Assured working hours.**
- **Repeatability is 2-8 $\mu$ rad.**



# C1 – Series Software

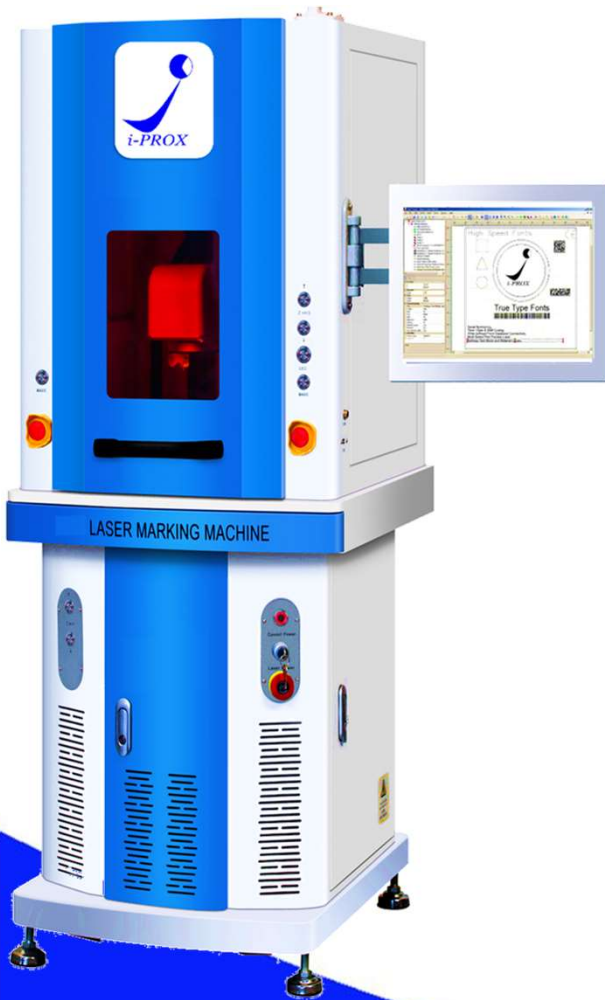


*Our software is window-based laser marking software developed by i-PROX, which is easy and friendly to use powerful tool. Support variety vector and bitmap graphic, and provide library and OCX component for lot marking applications. Easily to mark on plane or non-plane surface, also support to import and export data from our program files.*

- *Basic Objects like line, circle, arc, curve, text, arc text and baseline text.*
- *Software will support for the Images in JPG and PNG format.*
- *1D Barcode : Code39, Code128, Code93, Code Bar, ITF, MSI Code, US Post Net, UPC-A, UPC-E, EAN8, EAN13, UCC 128, EAN 128 & FIM.*
- *2D Barcode – Data Matrix*
- *Allow users to name, save, and load the marking parameters*
- *Users are allowed to edit the parameters of this object: Digital In, Digital Out, Do Pause, Delay Time , Motion, Set Position, Loop, Ring and Homing.*
- *Allow users to examine the mark position is correct or not.*



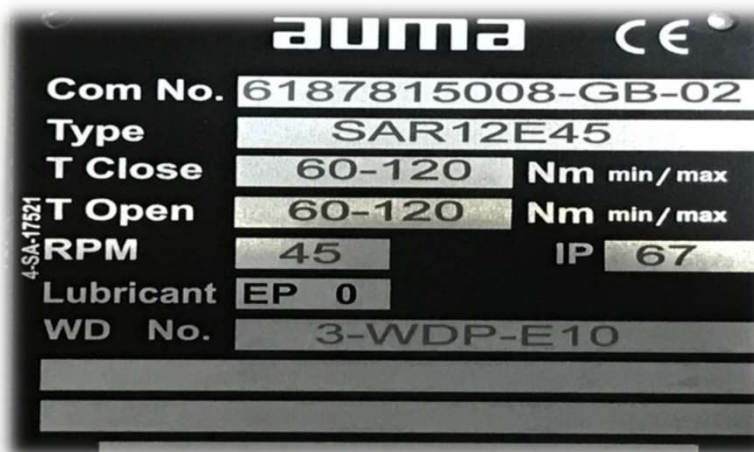
## C4 – Series Technical Data



Fiber LASER	20W	30W	50W
Marking window	100X100 / 150X150 / 175X175 / 200 X200		
Wavelength (nm)	1060~1085	1060~1085	1060~1085
Single Pulse energy (mJ) @20kHz	1	1@30kHz	1@50kHz
Beam Quality (M <sup>2</sup> )	<1.8	<1.8	<1.8
Beam Diameter (mm)	6~8	6~8	6~8
Pulse duration (ns) @20kHz	<120	<120@30kHz	<120@50kHz
Pulse repetition rate (kHz)	20 - 60	30 - 60	50 - 100
Output Power tuneability (%)	10 - 100		
Fiber cable length (m)	2	2	2
Working Voltage (VDC)	24		
Power consumption (W)	200	300	350
Cooling	Forced Air cooled		
Operating temperature	0° – 35° C		
Humidity	30% – 85%		



## Marking Samples



### Contact us

***IPROX Automations PVT. LTD.,***

*TS-1, Micro Industrial Estate,  
Thirumudivakkam,  
Chennai – 600044.*

*Contact No.: 9944359064.*

*E-mail : info@iproxauto.com /  
sales@iproxauto.com*

*Visit us : www.iproxauto.com*

